



**AVAILABLE  
NOW!  
INCLUDED  
ELEVATOR**

*The Barrington Plan*



South on Main's *Final Three* Luxury Townhomes  
by John Wieland, Founder & CEO, The JW Collection

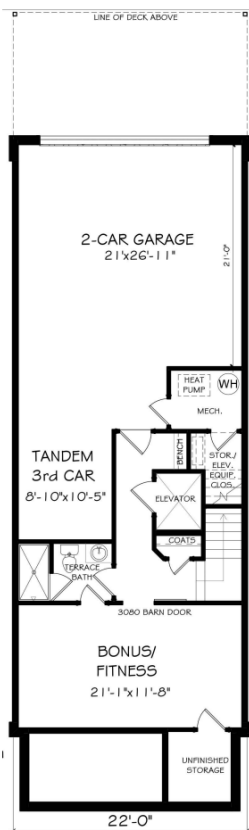
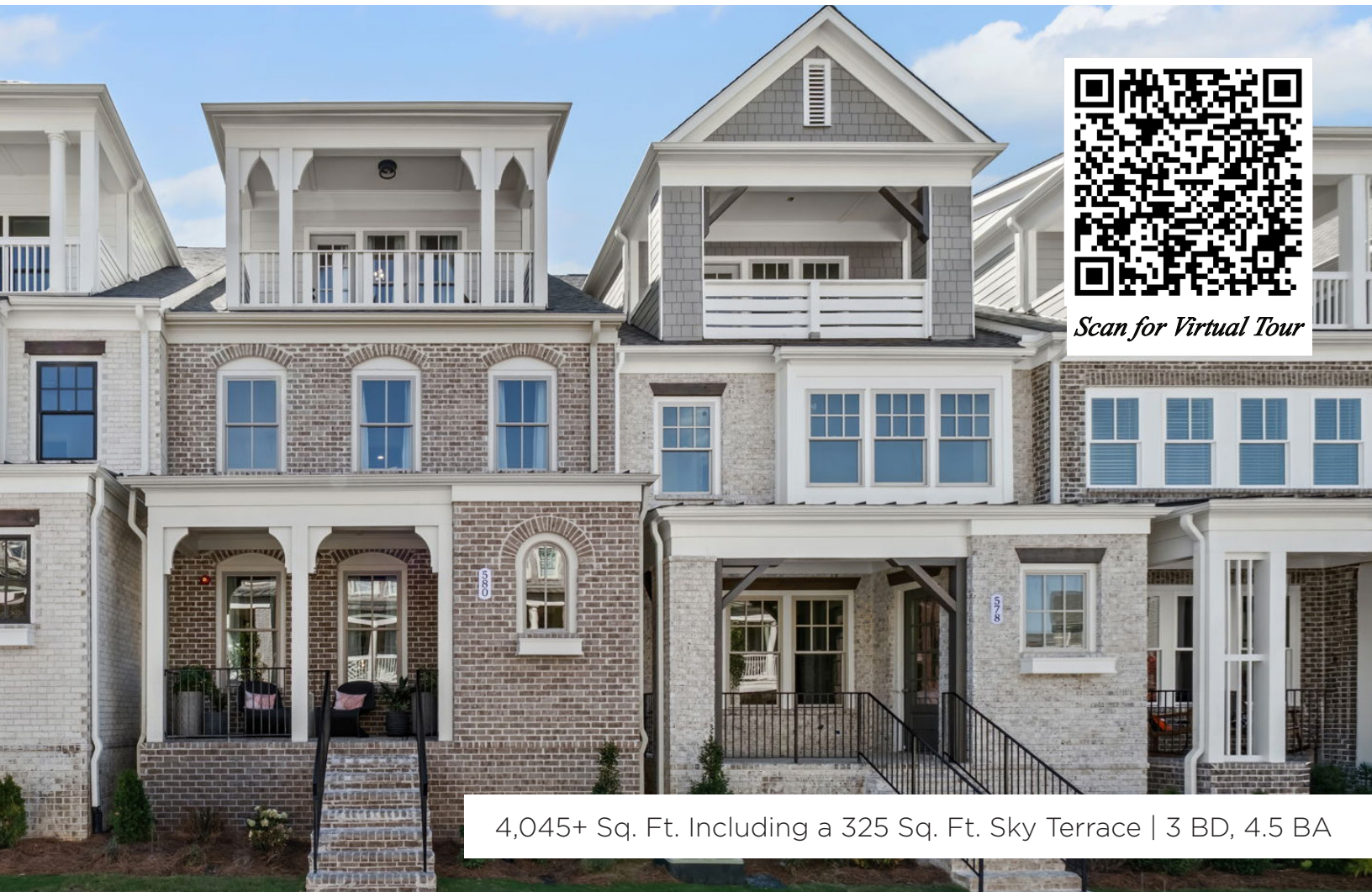
3,720-4,045+ Sq. Ft. Including a 325 Sq. Ft. Sky Terrace | 3 BD, 4.5 BA



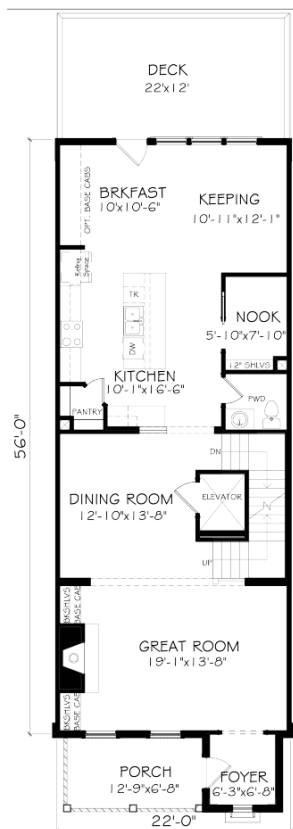
Don't miss your opportunity to own one of the final three luxury townhomes at South on Main. Thoughtfully designed across four levels, these residences feature an included private elevator, a rare three-car garage and multiple outdoor living spaces, including a stunning sky terrace and spacious, covered rear deck.

The open-concept main level showcases a chef's kitchen with JW Collection's signature cabinetry to the ceiling, an oversized island and seamless flow into the dining and great room areas. A flexible terrace-level bonus space with full bath is perfect for guests, a home office or fitness retreat, while the luxurious owner's suite offers a spa-inspired bath. Located just steps from vibrant downtown Woodstock and South on Main's wide array of upscale amenities, these final Barrington townhomes offer an unmatched blend of luxury, space and walkable living.

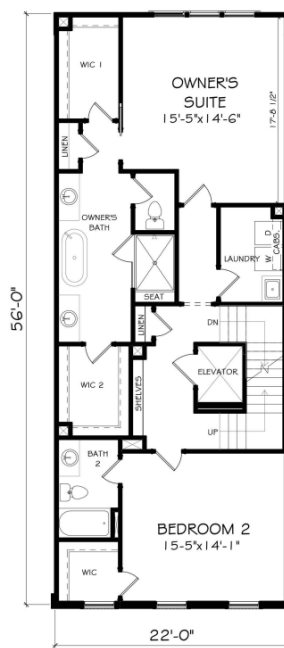




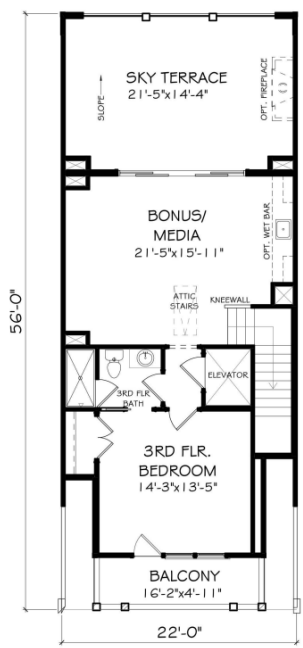
Terrace Level



First Floor

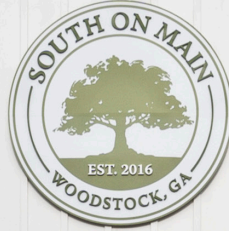


Second Floor



Third Floor

*The SHED at South on Main*



299

THE SHED



SOUTH ON MAIN  
9200 MAIN STREET  
WOODSTOCK, GA 30188  
770-970-0200  
SOUTHONMAINWOODSTOCK.COM

SALES BY JW COLLECTION BROKERS, LLC. SUBJECT TO CHANGES, ERRORS & OMISSIONS. EQUAL HOUSING OPPORTUNITY. 03-2026.